



ST REGIS

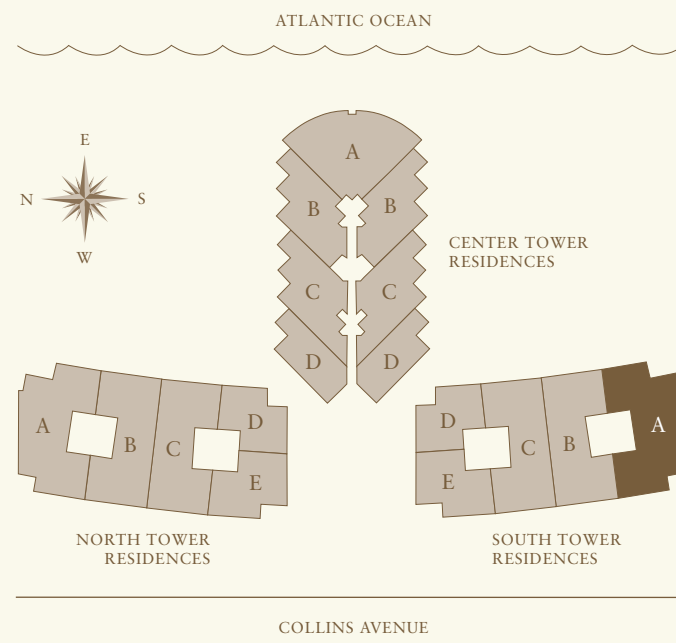
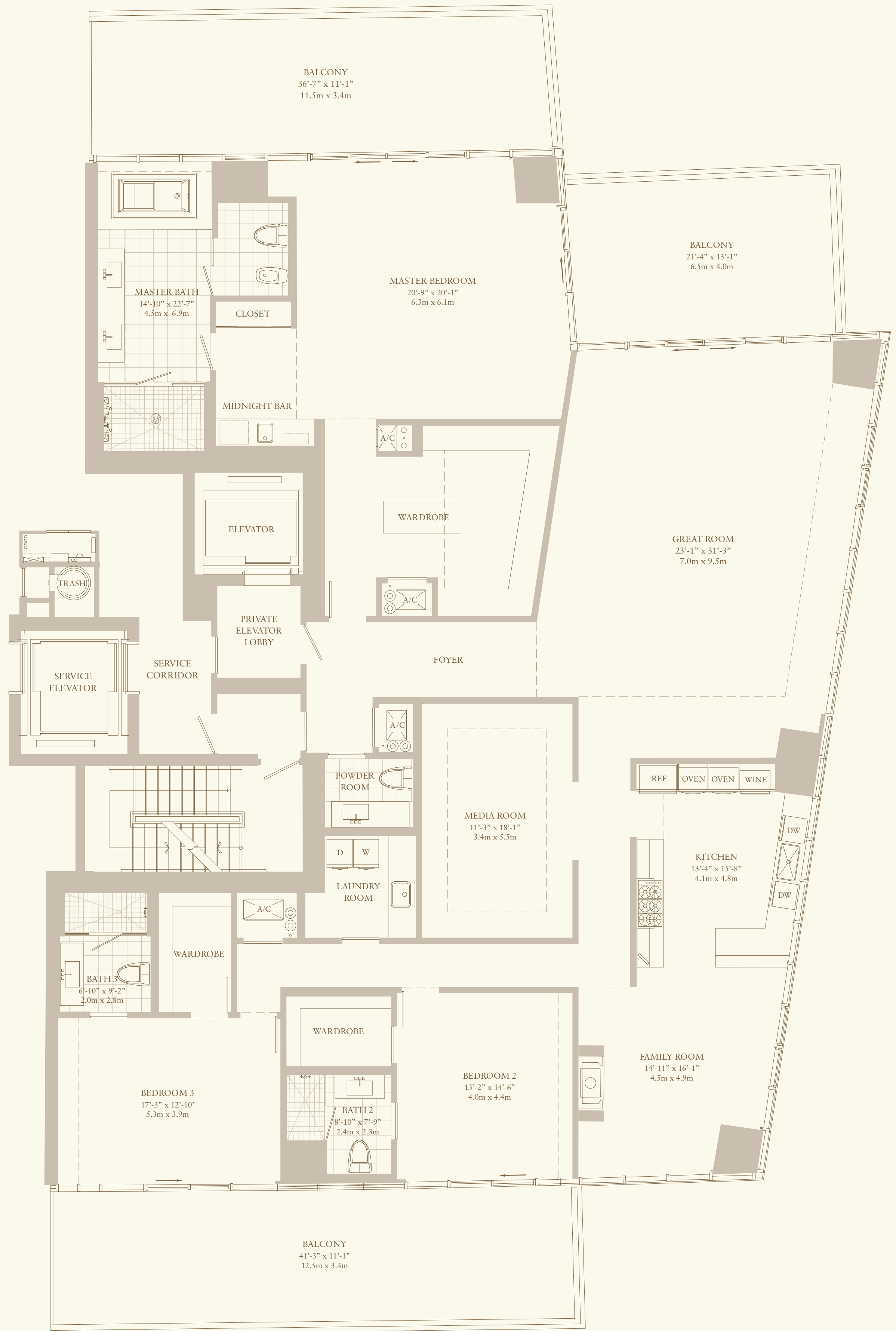
BAL HARBOUR
THE RESIDENCES

RESIDENCE A SOUTH TOWER

3 BEDROOM, 3 1/2 BATH PLUS MEDIA ROOM

	TOTAL SQ FT	TOTAL SQ M
RESIDENCE	3,884	360.8
BALCONY	1,132	105.2
TOTAL	5,016	466

PAINT TO PAINT		
RESIDENCE	3,524	327.4



The drawings herein are conceptual only and are subject to change without notice at the discretion of the developer. The developer reserves the right to make additions, deletions and modifications to the drawings as the developer may deem appropriate or desirable. Any furniture or decorator items depicted herein are shown for artistic and illustrative purposes only and are not included in the purchase and sale of the residence. Dimensions and square footages are approximate and may vary with actual construction. All of the materials, including tile, marble, stone, granite, cabinets, wood, stain, grout, wall and ceiling textures, mica, are subject to size and color variations, grain and quality variations, and pattern and texture variations. If circumstances arise which, in Seller's opinion, warrant changes of suppliers, manufacturers, brand names or items, or if Seller elects to omit certain items, Seller may modify and/or make substitutions for equipment, material, appliances, etc., with items, which in Seller's opinion are of equal or better quality (regardless of cost), and (vi) Seller has the right to substitute or change materials and/or stain colors utilized in wood décor (if any).

Stated dimensions are measured to the exterior boundaries of the exterior walls and the center line of interior demising walls and, in fact, vary from the dimensions that would be determined by using the description and definition of the "unit" set forth in the declaration (which generally only includes the interior airspace between the perimeter walls and excludes exterior structural components additionally, measurements of rooms set forth on any floor plan are generally taken at the greatest points of each given room (as if the room were a perfect rectangle), without regard for any cut outs accordingly, the area of the actual room will typically be smaller than the product obtained by multiplying the stated length times width. All dimensions are approximate and all floor plans and development plans are subject to change.

©2010 Starwood Hotels & Resorts Worldwide, Inc. All Rights Reserved. Oral representations cannot be relied upon as correctly stating representations of the developer. For correct representations, make reference to the documents required by section 718.505, Florida statutes, to be furnished by a developer to a buyer or lessee. Certain units in this condominium are subject to timeshare estates. Obtain the property report required by federal law and read it before signing anything. No federal agency has judged the merits or value, if any, of this property this offering is made only by the prospectus for the condominium and no statement should be relied upon if not made in the prospectus. Not an offering where prohibited by state law. The developer's use of the St. Regis® trademarks is pursuant to a license from the Sheraton LLC. The complete offering terms are in a offering plan available from the sponsor file no. 07-0294

