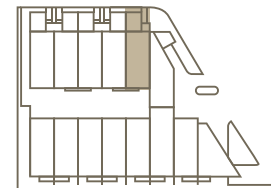
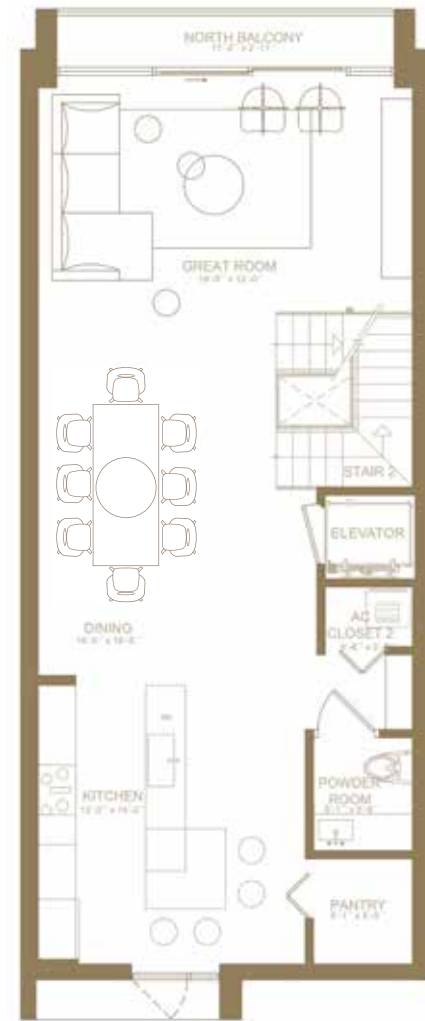


MAJESTIC *palm*

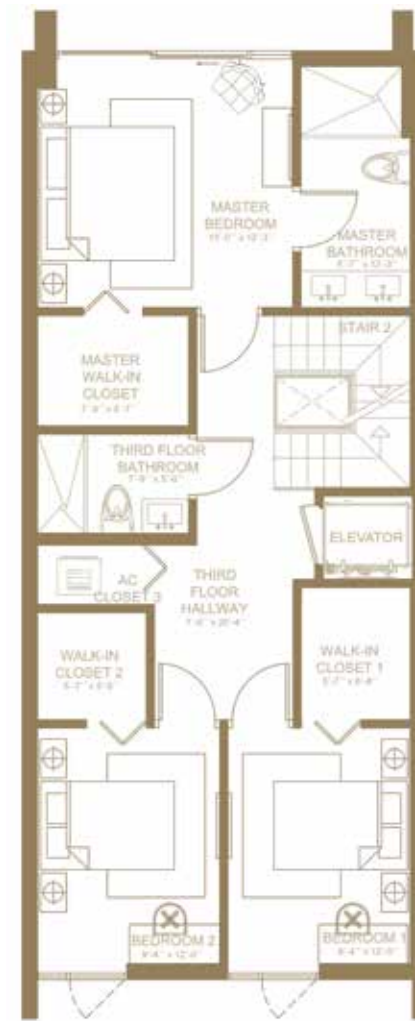
Townhome Units shown are examples of townhome unit types and may not depict actual townhome units. Stated square footages are ranges for a particular townhome unit type and are measured to the exterior boundaries of the exterior walls and the centerline of interior demising walls and in fact vary from the area that would be determined by using the description and definition of the "unit" set forth in the Declaration of Covenants and Restrictions for Palm Villas Homeowners' Association (which generally only includes the interior airspace between the perimeter walls and excludes interior structural components). All depictions of appliances, plumbing fixtures, equipment, counters, soffits, floor coverings and other matters of detail are conceptual only and are not necessarily included in each unit. Consult your agreement for the items included with the Unit. Dimensions and square footage are approximate, will vary with specific unit type, and may vary with actual construction. Additionally, measurements of rooms set forth on any floor plan are nominal and generally taken at the greatest points of each given room (as if the room were a perfect rectangle), without regard for any closets. Unit orientation and windows (including number, size, orientation and awnings), balcony (including configuration, size and railing/balustrade), structure and mechanical chases may vary.



GROUND FLOOR
Garage Entry



SECOND FLOOR
Main Living



THIRD FLOOR
Master Suite and Bedrooms



FOURTH FLOOR
Rooftop Terrace and Amenities

MAJESTIC PALM RESIDENCE 5

RESIDENCE DESCRIPTION

3 BED | 4.5 BATH

Family + Den + Garden + Balcony + 2 Covered Parking Spaces

TOTAL A/C 2,771 sq. ft. 257 sq. mt.

OUTDOOR LIVING 1,297 sq. ft. 120 sq. mt.

TOTAL 4,068 sq. ft. 377 sq. mt.

