

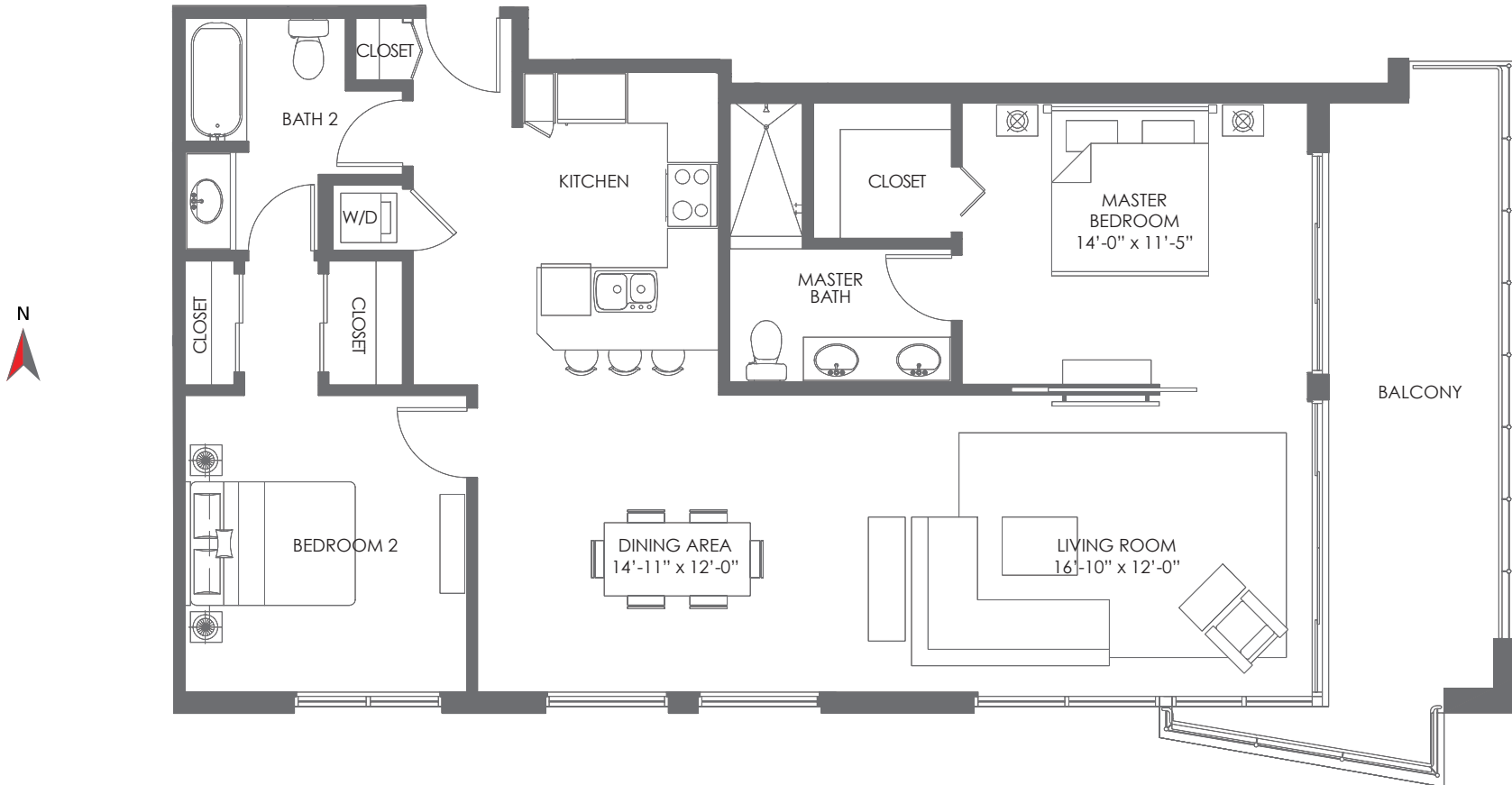
RESIDENCE
08

2 BEDROOMS / 2 BATHROOMS

FLOORS 9-14

FLOORS 15-18

A/C AREA	1,210 S.F. (112.4 M ²)	1,222 S.F. (113.5 M ²)
BALCONIES	211 S.F. (19.6 M ²)	208 S.F. (19.3 M ²)
TOTAL	1,421 S.F. (132 M ²)	1,430 S.F. (132.8 M ²)



THE CRIMSON
WATERFRONT RESIDENCES

Stated dimensions are measured to the exterior boundaries of the exterior walls and the centerline of interior demising walls and in fact vary from the dimensions that would be determined by using the description and definition of the "unit" set forth in the declaration. All floor plans and development plans are approximate and subject to change



FLOORS
9 TO 18



BISCAYNE
BAY