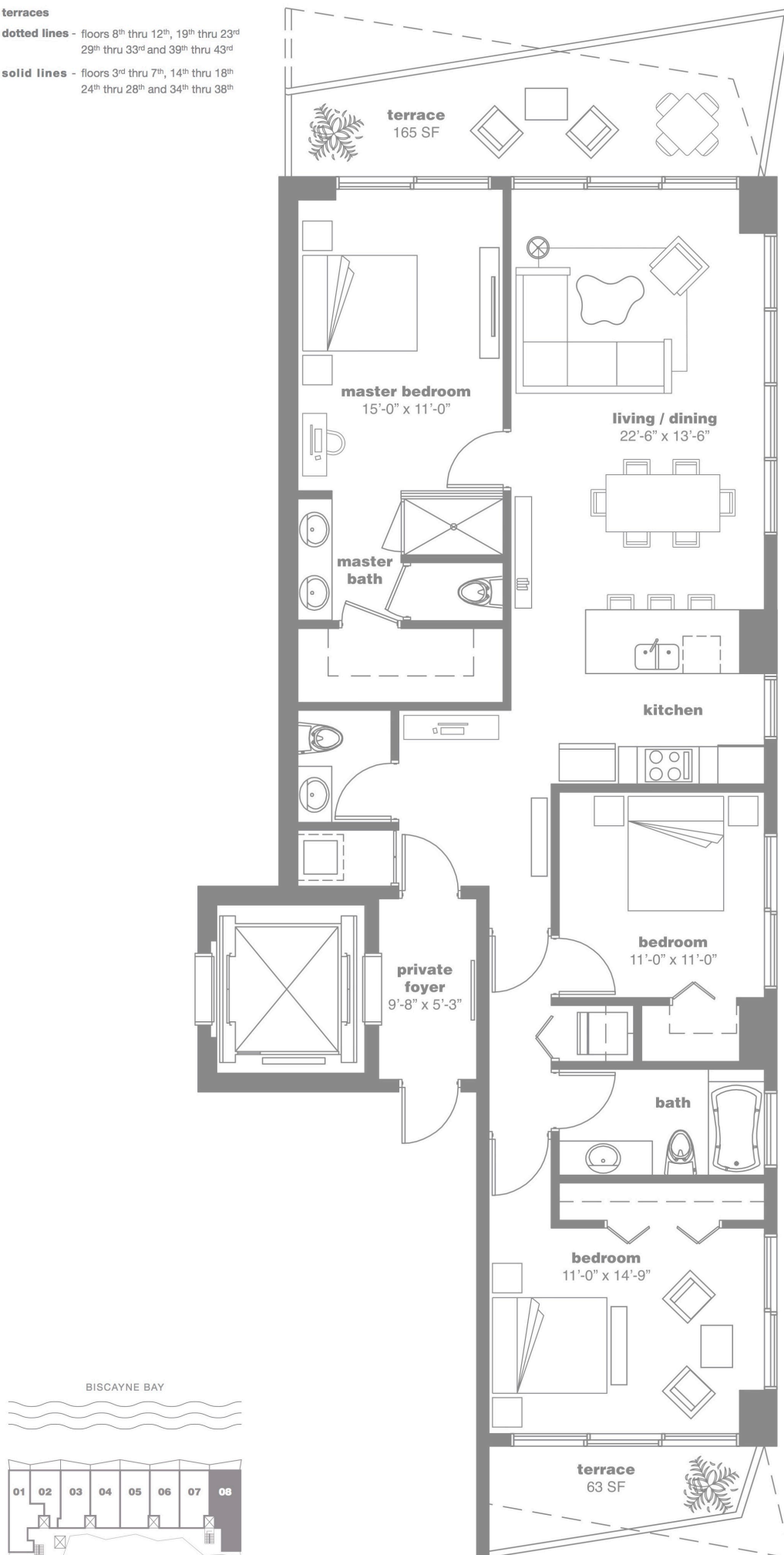


terraces

dotted lines - floors 8th thru 12th, 19th thru 23rd
29th thru 33rd and 39th thru 43rd

solid lines - floors 3rd thru 7th, 14th thru 18th
24th thru 28th and 34th thru 38th



3 Bedrooms, 2 1/2 Bathrooms

AC: 1,530 Sq.. Ft. 142.1 Sq.. Mt. // Terrace: 228 Sq.. Ft. 21.2 Sq.. Mt. // Total Sq.. Ft.: 1,758 // Total Sq.. Mt.: 163.3

Stated dimensions are measured to the exterior boundaries of the exterior walls and the centerline of interior demising walls and in fact vary from the dimensions that would be determined by using the description and definition of the "Unit" set forth in the Declaration (which generally only includes the interior airspace between the perimeter walls and excludes interior structural components). For your reference, the area of the Unit, determined in accordance with those defined unit boundaries, is + or - 1,395 sq. ft. for units 08. Note that measurements of rooms set forth on this floor plan are generally taken at the greatest points of each given room (as if the room were a perfect rectangle), without regard for any cutouts. Accordingly, the area of the actual room will typically be smaller than the product obtained by multiplying the stated length times width. All dimensions are approximate and may vary with actual construction, and all floor plans and development plans are subject to change.